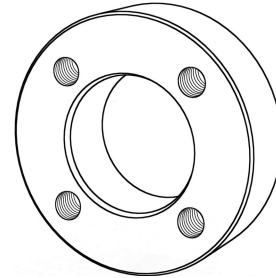


## Data sheet

### Weld-in flange DN 50

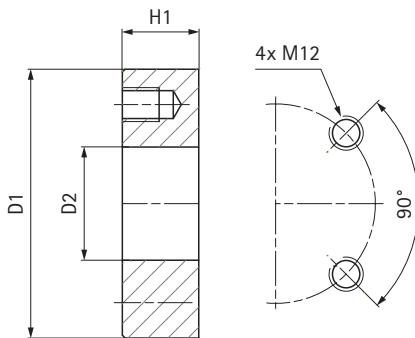
For installation of Jet CIP valve DN 50 on vessel.



#### Technical data

Operating pressure	max. 6 barg	max. 87 psi
Operating temperature	max. 150°C	max. 302 F
Material	316L	316L
Surface roughness	Ra 1.2 µm	Ra 1.2 µm
For vessel diameter	700 ... 2300 mm	27.56 ... 90.55 inch

#### Dimensions



	H1	D1	D2
[mm]	27	95	48
[inch]	1.06	3.74	1.89

(Finishing dimensions see welding instructions '0640-18 BA Weld-in flange')

#### Weld-in flange DN50

Weld-in flange DN50

#### Order no.

48629

#### Documentation

Data sheet  
Welding instructions

#### Order no.

57494

#### Options

#### Extended documentation

Material certificate EN 10204-3.1

#### Order no.

57495